

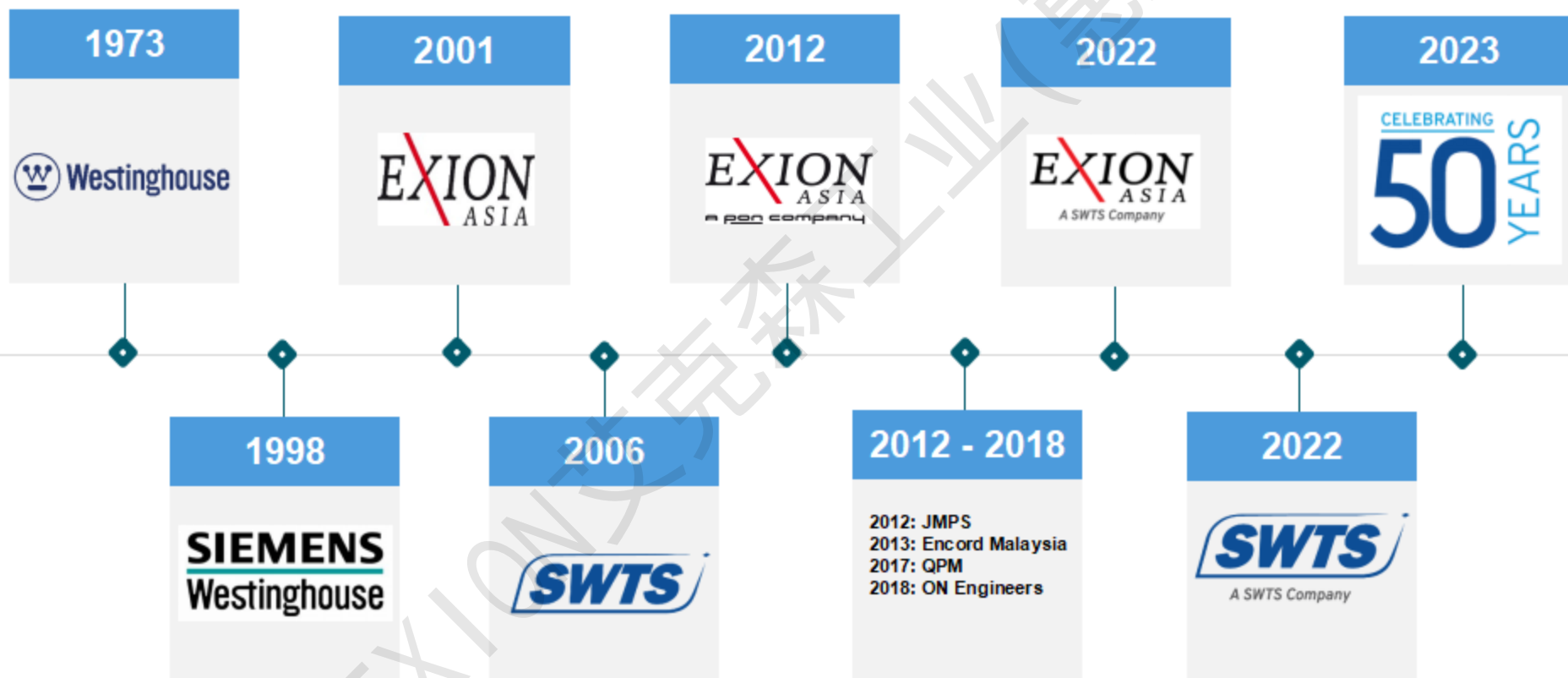
# Flow Control Solutions 流体解决方案

*Company presentation:*  
Exion Asia Huizhou/艾克森工业（惠州）

China, July 2023



# Our History and Heritage/我们的历史



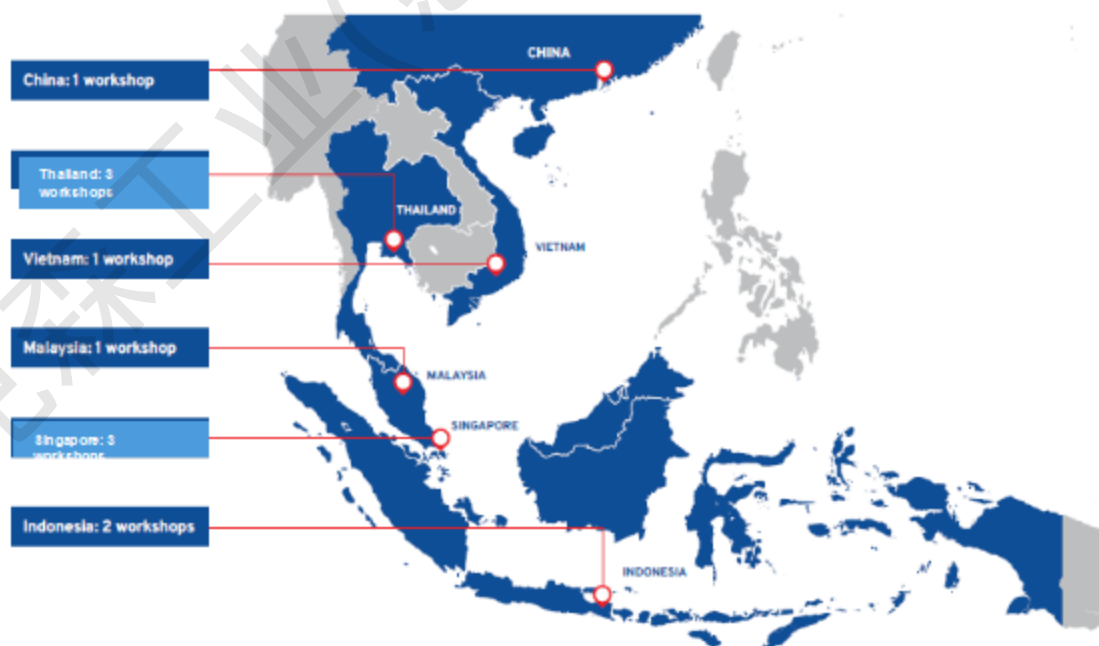
©2023 Exion Asia proprietary and confidential information

# Where we are/公司地点



*We Keep Your Plants  
and Vessels Running*

## SWTS ASIA GROUP OF COMPANIES



©2023 Exion Asia proprietary and confidential information

# Exion Huizhou Milestones/ 艾克森惠州发展历程

- 2008年12月份成立惠州市欧飒阀门技术服务有限公司
- 2008年开始代理GE旗下Consolidated安全阀和Masoneilan调节阀产品
- 2009年初参与中海壳牌一期大修服务现场填料更换和阀门维修
- 2014年成立艾克森工业（惠州）有限公司，并将原欧飒阀门维修的业务合并
- 2016年跟大鹏LNG签订长期阀门维保框架协议
- 2017年开始代理英国KEMET平面研磨设备产品
- 2018年开始代理美国GARLOCK工厂板材和垫片产品
- 2018年开始代理美国LUFKIN齿轮箱产品和售后服务
- 2019年开始代理英国IMI集团的产品（包含CCI, Z+J, B&R, Orton, Truflo）
- 2019年开始代理美国RMS（原AC离心机）产品的售后服务
- 2019年开始在深圳友联船厂设立维修中心，参与LNG船阀门维修业务
- 2022年开始跟中海油平台签订齿轮箱框架维保协议
- 2022年西门子工业认证的ASP授权服务中心

**Grow Up /发展**

**Diversify/多元化**

**Service Oriented**  
服务为导向

**Fast Response**  
快速反应

**OEM Support**  
厂家技术支持

**High Quality**  
高质量

**Lower Cost**  
降低成本

**Act Professionally**  
专业的行为

**WIN--WIN**



### Mission

“In 5 years time, to be a successful Flow Control Trading and maintenance Company to the Oil & Gas and Petrochemical industry in Southern China.  
五年内成为华南地区石化行业领先的流体设备贸易和专业维修公司

## Flow Control Solutions/流体解决方案

### Valves & Actuators 阀门及执行机构维修



- **Pressure Safety Valves**  
安全阀维修
- **Control Valves**  
调节阀维修
- **On/Off Valves**  
开关阀维修
- **Electric/Pneumatic Actuators/执行机构维修**
- **Total valve management**  
/阀门管理服务

### RE Repair 转动设备维修



- **Pump Repair**  
高速泵/离心泵维修
- **Gearbox Repair**  
齿轮箱维修
- **Steam Turbine repair**  
汽轮机维修
- **Compressor Repair**  
压缩机维修

### Products 代理产品



- **Lurkin Gearbox**  
齿轮箱产品
- **RMS (AC compressor)**  
螺杆和离心压缩机
- **IMI Engineering Valves**  
IMI裂解气清焦阀/CCI  
减温减压器/井口阀/调  
节阀/Orton三偏心蝶阀  
/Truflo球阀

### ASP Service 西门子ASP服务



- **System Upgrade**  
系统升级
- **Project Service**  
项目集成服务
- **Preventive Maintenance**  
预防性维修服务
- **Trouble Shooting**  
故障排除

...Serving a variety of industries/我们服务的行业

**Chemicals**

石化



**Industries  
Served/  
服务的行业**

**Oil&Gas  
/海洋平台**



**Shipyard/船厂**



**Power  
Generation  
电力**



**General  
Industry  
通用工业**

**Pulp&Paper  
造纸**



...and having a broad range of customers/我们的客户

### Engineering & Procurement Contractors (EPC)



**WorleyParsons**



### End-users



**中国海油**



The Chemical Company



**ExxonMobil**  
Chemical



中化  
SINOCHEM



澳電  
cem



金海浆纸  
JINSHAN PULP & PAPER



**SSTPC**

**BRIDGESTONE**



Making our world  
more productive



国华电力公司



**飞扬漆**



Only a selection of customers

Authorized agent of:



- To deliver the high performance gearing solutions and services to solve your most complex power transmission challenges.



- A Leader in sealing integrity. Core products are packing and Gylon patterned gasket;



- Leader in precision lapping and polishing technology. Using diamond compound and diamond slurry, which are manufactured in house to ISO 9001:2015 quality standards.



- CCI Control valve for critical application in petrochemical/refinery /power plant/offshore
- Z+J, TH Jansen, Truflo, Remosa Isolation valve
- B+R safety valve and SIT actuator



- Previous AC Compressor
- a. Screw Compressor
- b. Centrifugal Compressor



## SRV Repair/安全阀维修

- a. Ventil Safety valve test bench/安全阀测试台
- b. Kemet Lapping machine Set/安全阀平面研磨机及精度测量仪
- c. Safety valve reseating machine/安全阀阀座车削设备
- d. Complete set of hand lapping tool/整套手工研磨及抛光盘

Advantage/优势:

Exion is the biggest SRV repair company in Singapore with ASME VIII/VR certificate. Exion Huizhou has 4 technicians with SRV level 2 certificates. We represent Dresser from 2006-2018. Effective from 2019, we represent Bopp&Reuther. We are capable of repair, retrofit SRV. Meanwhile, we have oversea channels to source parts for different brands to lower client's purchase cost and improve efficiency.

我司人员均取得国家的安全阀培训的2级证书，2006-2018年公司代理美国德莱赛的安全阀产品销售，2019年开始代理德国博普安全阀。自2006年开始负责中海壳牌全厂3000台安全阀的备件以及技术服务。同时跟大亚湾捷勋检测站合作，负责安全阀的维修工作。

同时艾克森新加坡公司是新加坡最大的安全阀维修和校验公司，取得了美国ASME VIII和VR证书。目前艾克森工业（惠州）是德国BOPP&REUTHER安全阀在国内的总代理。



Authorized agent of:



## Control Valve Repair/调节阀维修

- a. Test Bench and portable control valve test panel/调节阀测试设备
- b. Lapping machine/调节阀研磨设备
- c. Valve Test Software /阀门测试软件
- d. Valve data management software/阀门数据管理软件
- e. Valve 3D printing technology/工厂3D打印技术重新设计阀门内件

**Test standards Applied/调节阀测试标准:**

FCI70-2 Seat leakage test/阀座泄露测试根据FCI70-2标准进行或生产厂家标准

API 598/6D Shell Test/阀体测试按照API598/6D

Masoneilan认证的售后合作伙伴  
Authorized agent of:



**DRAG Design**  
**CCI Patent Products**  
**CCI专利产品DRAG阀门,**  
**针对高压差工况**

## Manual Valve Repair/手阀维修

- a. **Lapping machine up to DN900/阀门研磨设备**（目前有DN50-DN900的研磨机）
- b. **Hydro test bench/阀门测试台**（目前有DN300的测试台及成套法兰）
- c. **Portable high pressure test bench/便携式高压测试台**（up to 10,000psig）
- c. **Valves tested according to API598 or API6D standard.**

按照API598/API6D的标准来进行阀门压力测试

- d. **In-situ valve repair/高压焊接阀门在线维修**
- e. **In-situ valve repacking/阀门在线更换填料**
- f. **Valve repair consultation service and technical service/阀门维修技术服务**
- g. **Special type valve repair service together with OEM technical support**

在原厂技术人员支持下进行特殊类型阀门的维修和故障排除

- \*长期合作的球体修复和喷涂供应商；
- \*长期合作的零件激光熔覆服务商；
- \*长期合作的蝶阀硫化橡胶阀座供应商



# IMI Z+J Repair/Z+J阀门维修

- 6 engineers trained in IMI shanghai

有6个在IMI上海工厂培训过的工程师

- IMI technical support

IMI工厂的技术指导服务

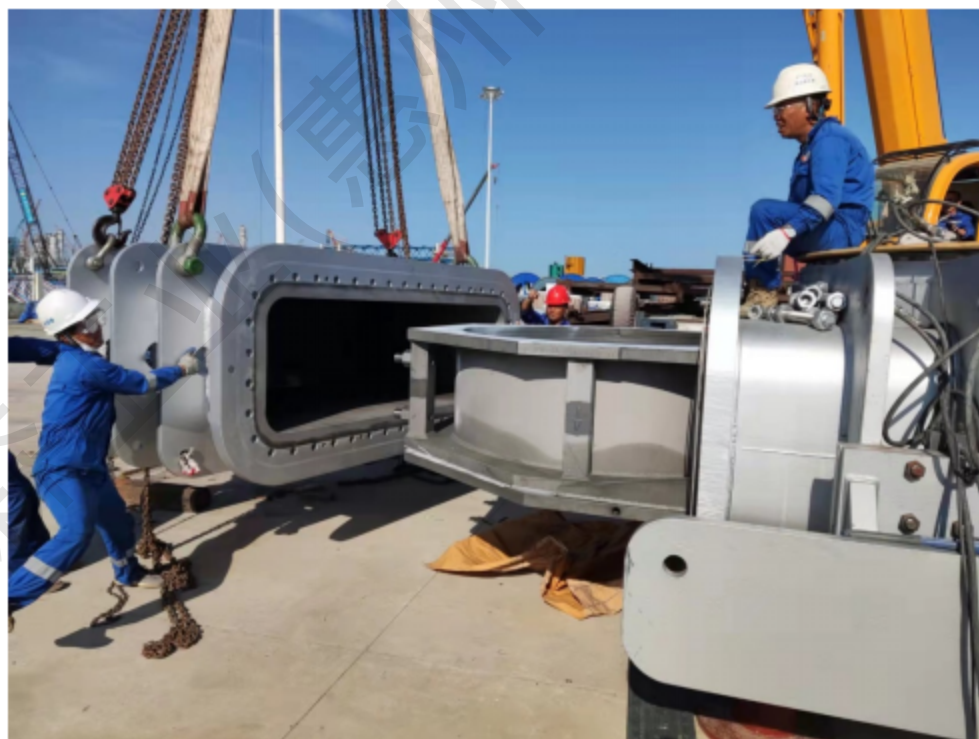
- Actual repair record--Jieyang Petrochemical

揭阳石化60寸Z+J塔底阀维修

- Future on-hand training for Z+J valves in PDH/

DDTC valves in Ethylene Plant

PDH项目和乙烯裂解项目现场阀门维修培训



**\*Strive to be future IMI southern service center  
成为IMI在华南区的售后服务中心**

Key Accounts: Sino-chem QuanZhou, Fujian Petrochemical, GuLei Petrochemical, CSPC Phase 1/Phase 2, JieYang Petrochemical/MaoMing Petrochemical/Sinopec ZhanJiang /DongGuan JuZhengYuan, Fumosa NingBo

区域内核心客户：中化泉州，福建炼化，古雷石化，中海壳牌1/2期，揭阳石化，茂名石化，中科炼化，东莞巨正源，台塑宁波PDH

# IMI 阀门维修培训及认证



现场服务合作协议	
本服务协议（本“协议”）由下列双方于 ____ 年 ____ 月 ____ 日在上海松江签署（“生效日”）：	
1. 埃克索技术（上海）有限公司，在中国上海成立并注册，公司编号为 91310000MA1JLJCM5F，其注册地址为中国上海 800 弄 1-5 号 3 幢（“IMI”）；和	
2. 艾克森工业（惠州）有限公司，在中国惠州市成立并注册，公司编号为 9144130032C602114F，其注册地址为广东省惠州市大亚湾中兴北路 66 号车河（“服务商”）	
鉴于：	
1. IMI 是一家专业从事阀门设计、生产，并为客户提供阀门现场调试、安装及维修等现场服务的产品品牌方公司，其有意根据本协议之条件及条款在现场服务领域与服务商合作；	
2. 服务商有意根据本协议之条件及条款与 IMI 合作，提供相关现场服务。	
鉴此，双方经友好协商，达成如下协议。	
1. 合作模式与范围	
1.1 双方合意就 IMI Z&J 产品的现场服务，包括但不限于产品维修、安装、调试进行合作。IMI 对服务商提供必要培训，服务商提供现场服务的辅助性及补充性工作。	
1.2 如果 IMI 与现场用户直接签署服务合同的，则根据情况，IMI 将另行向服务商签发 IMI 标准版本采购合同（“适用合同”），由服务商提供支持服务。IMI 承担用户合同项下责任。	
1.3 如果服务商直接与现场用户签署服务合同的，则服务商将另行与 IMI 签署 IMI 标准版本销售合同，由 IMI 对服务商提供现场服务支持，服务商承担用户合同项下责任。	
1.4 如果服务商同时与 IMI 签订有效代理协议的，则佣金或买卖交易利润率的约定按该协议执行。	
2. 服务与标准	
2.1 服务商应根据本协议及适用合同之条件及条款，及时派出符合资质、能力条件以及数量要求的员工（“指派员工”），至指定地点，为 IMI 的现场服务提供辅助性、补充性劳动。	
2.2 双方同意，虽然服务商所指派员工从事辅助性和补充性劳动，但该等劳动及其服务成果，系 IMI 所提供现场服务不可分割的一部分，对 IMI 整体现场服务的态度、质量以及客户影	

22 September 2022

艾克森工业（惠州）有限公司  
惠州大亚湾东头中兴北路 66 号

EXION ASIA (HUZHOU) CO., LTD.  
No. 66 North Zhongxing Road (Plot No. 1), Dapeng Petrochemical Park, Huizhou City, China

Completion of Training

This is to certify that 艾克森工业（惠州）有限公司 (Exion Asia (Huizhou) Co., Ltd.) has successfully completed the training titled "VwW & DDTC 产品维修服务" (Repair and Maintenance of VwW & DDTC) in our company, with reference to the partial fulfillment of the requirements to be an authorised service supplier for the service of IMI Z&J products within the mutually agreed territory. All necessary details were provided from IMI Critical Engineering China for the establishment of this training.

We look forward to a successful partnership in the future.

Yours sincerely

Philips Chen 陈磊  
Interim Managing Director, China  
IMI Critical Engineering

Breakthrough Engineering

IMI Critical Engineering

IMI Critical Engineering China  
No. 855-2 Xiangyang Road,  
Songjiang District,  
Shanghai 201500,  
China  
Tel: +86 21 3873 8828  
Fax: +86 21 6860 9828  
imi-critical.com

- ① IMI BOPP & REUTHER
- ② IMI CCI
- ③ IMI CCI
- ④ IMI FLUID KINETICS
- ⑤ IMI HN
- ⑥ IMI ORION
- ⑦ IMI P&M
- ⑧ IMI REMOSIA
- ⑨ IMI STI
- ⑩ IMI TH JAKSEN
- ⑪ IMI THOMPSON VALVES
- ⑫ IMI TRIFLO ITALY
- ⑬ IMI TRIFLO MARINE
- ⑭ IMI TRIFLO ROMA
- ⑮ IMI Z&J
- ⑯ IMI ZWESCH

IMI Critical Engineering is a Division of IMI plc.  
IMI Critical Engineering is a registered company in the UK.

## CCI以及Z+J维修服务认证

- Electric actuator functional test

电动执行机构功能性测试

- Electric actuator repair

电动执行机构维修

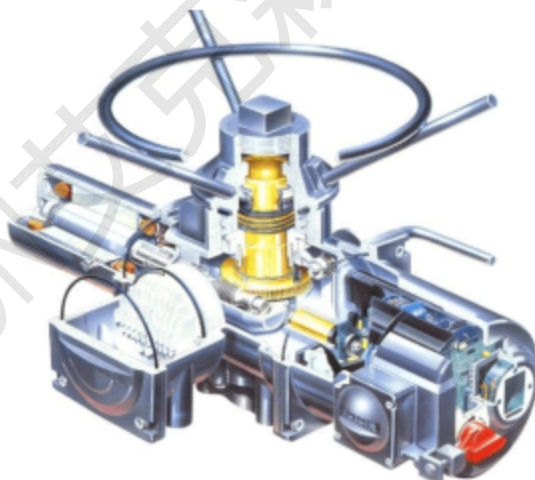


- Pneumatic actuator repair/online maintenance

气动执行机构维修/在线保养

- Multi-source Supply channels

多渠道备件供应



熟悉ROTOR以及BIFFI执行机构的保养及维修

## ■ Maintenance Management & Specialist Capabilities/ 阀门综合管理服务

- a. Turnaround Specialists-(repair, overhaul and test SRV, control valve and manual valves supply include in-situ repair )  
大修阀门备件供应及维修服务。



- b. Maintenance database services under ValuKeep. The monitoring of valve performance and maintenance contributing to Predictive Maintenance.  
阀门数据管理，通过跟踪阀门维修状态来协助客户制定预防性维修计划



- c. Parts commonality for maximizing parts and minimizing inventory for customers.

通过对客户阀门数据的梳理来优化客户的库存，降低成本。



**EXION**  
Huizhou  
A SWTS Company

- 

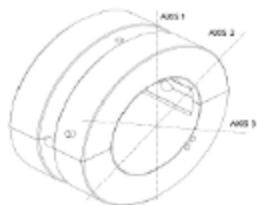
我司是LUFKIN和ALLEN GEAR齿轮箱产品在国内唯一的售后服务中心

## 产品和服务授权

**EXION**  
Huizhou  
A SWTS Company

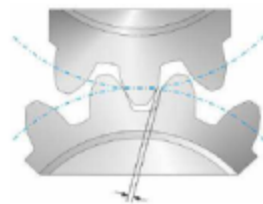
Technical drawing of a mechanical part, likely a bracket or support structure, showing dimensions and annotations. The drawing includes a top view and a side view. Key dimensions and features are labeled:

- Top View Dimensions:**
  - Overall width: 513.4
  - Overall height: 147.0
  - Distance from left edge to first vertical feature: 62.5 STIFFNESS
  - Distance from first vertical feature to center: 365
  - Distance from center to second vertical feature: 365
  - Distance from second vertical feature to right edge: 733 STIFFNESS
  - Distance from right edge to last vertical feature: 109
  - Distance from left edge to first horizontal feature: 35.1
  - Distance from first horizontal feature to center: 126.4
  - Distance from center to second horizontal feature: 270
  - Distance from second horizontal feature to right edge: 201
  - Distance from right edge to last horizontal feature: 12.6
  - Distance from last horizontal feature to right edge: 25.4
  - Distance from left edge to first vertical feature: 126.4
  - Distance from first vertical feature to center: 365
  - Distance from center to second vertical feature: 365
  - Distance from second vertical feature to right edge: 733
  - Distance from right edge to last vertical feature: 109
  - Distance from left edge to first horizontal feature: 35.1
  - Distance from first horizontal feature to center: 126.4
  - Distance from center to second horizontal feature: 270
  - Distance from second horizontal feature to right edge: 201
  - Distance from right edge to last horizontal feature: 12.6
  - Distance from last horizontal feature to right edge: 25.4
- Side View Dimensions:**
  - Overall height: 147.0
  - Distance from top edge to first horizontal feature: 35.1
  - Distance from first horizontal feature to center: 126.4
  - Distance from center to second horizontal feature: 270
  - Distance from second horizontal feature to right edge: 201
  - Distance from right edge to last horizontal feature: 12.6
  - Distance from last horizontal feature to right edge: 25.4
- Annotations:**
  - Red arrows pointing to specific features.
  - Blue arrows pointing to specific features.
  - Green arrows pointing to specific features.
  - Yellow arrows pointing to specific features.
  - Black arrows pointing to specific features.
  - White arrows pointing to specific features.
  - Grey arrows pointing to specific features.
  - Light blue arrows pointing to specific features.
  - Light green arrows pointing to specific features.
  - Light yellow arrows pointing to specific features.
  - Light pink arrows pointing to specific features.
  - Light purple arrows pointing to specific features.
  - Light blue arrows pointing to specific features.
  - Light green arrows pointing to specific features.
  - Light yellow arrows pointing to specific features.
  - Light pink arrows pointing to specific features.
  - Light purple arrows pointing to specific features.



Outside diameter (OD)	Axis 1	Axis 2	Axis 3
Inboard side			
Outboard side			

Inside diameter (ID)	Axis 1	Axis 2	Axis 3
Inboard side			
Outboard side			

[illegible]

DATE \_\_\_\_\_

# Lufin GearBox Repair/中海油荔湾齿轮箱维修

End User/用户: Liwan-31/荔湾31平台  
Driven Equipment: GE Compressor  
驱动设备: GE压缩机  
Job/工作内容: Overhaul/车间解体检修

## Major works performed 主要工作内容

- a. Bearing clearance check;  
轴瓦间隙检查确认
- b. Bearing surface PT  
轴瓦PT检查
- c. Gear mesh and backlash check;  
齿轮啮合和齿侧间隙检查
- d. Gear shaft runout check;  
齿轮轴跳动检查
- d. Gear surface PT;  
齿面PT检查
- f. Parts Cleaning  
齿轮箱零件清洁
- g. Lube oil piping system inspection;  
润滑油系统管路清洁度和腐蚀检查



# 宁夏哈纳斯燃气齿轮箱维修

End User/用户: 宁夏哈纳斯燃气

Driven Equipment: DR Compressor

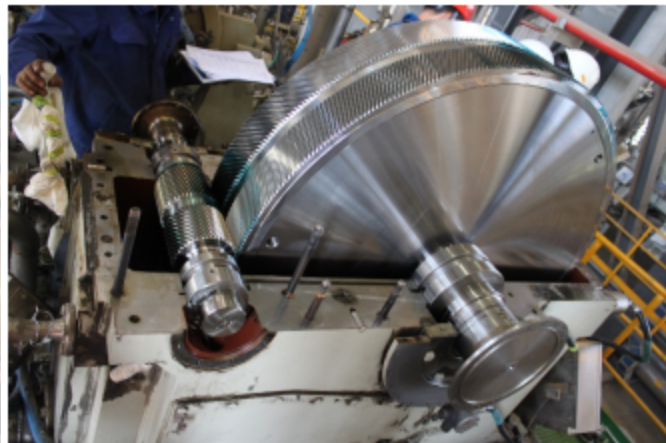
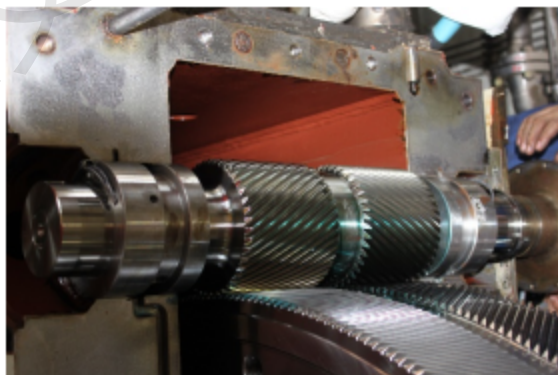
驱动设备: DR压缩机

Job/工作内容: Onsite overhaul/现场检修

## Major works performed

主要工作内容

- a. Bearing clearance check;  
轴瓦间隙检查确认
- b. Bearing surface PT  
轴瓦PT检查
- c. Gear mesh and backlash check;  
齿轮啮合和齿侧间隙检查
- d. Gear shaft runout check;  
齿轮轴跳动检查
- d. Gear surface PT;  
齿面PT检查
- f. Parts Cleaning  
齿轮箱零件清洁
- g. Lube oil piping system inspection;  
润滑油系统管路清洁度和腐蚀检查



## Gas Turbine Generator Drives

### 燃气轮机驱动发电机

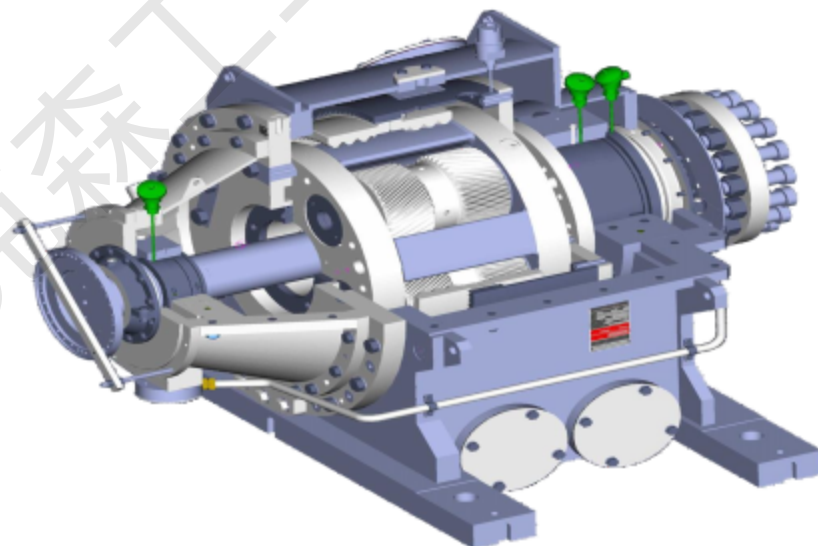
- ★ 3 to 38MW output.
- ★ 3到38MW的输出功率
- ★ Market Leader within segment
- ★ 细分市场技术的领导者



## Steam Turbine Generator Drives

### 蒸汽轮机驱动发电机

- ★ Niche segment : high efficiency
- ★ 细分市场高效传动
- ★ Market leader within segment
- ★ 市场上的领导者



\*Compact design/紧凑的设计

\*High power density and efficiency

\*高功率和高效率

\*Achieve high ratio reduction/高传动比



**Allen Gears**

a Baker Hughes business

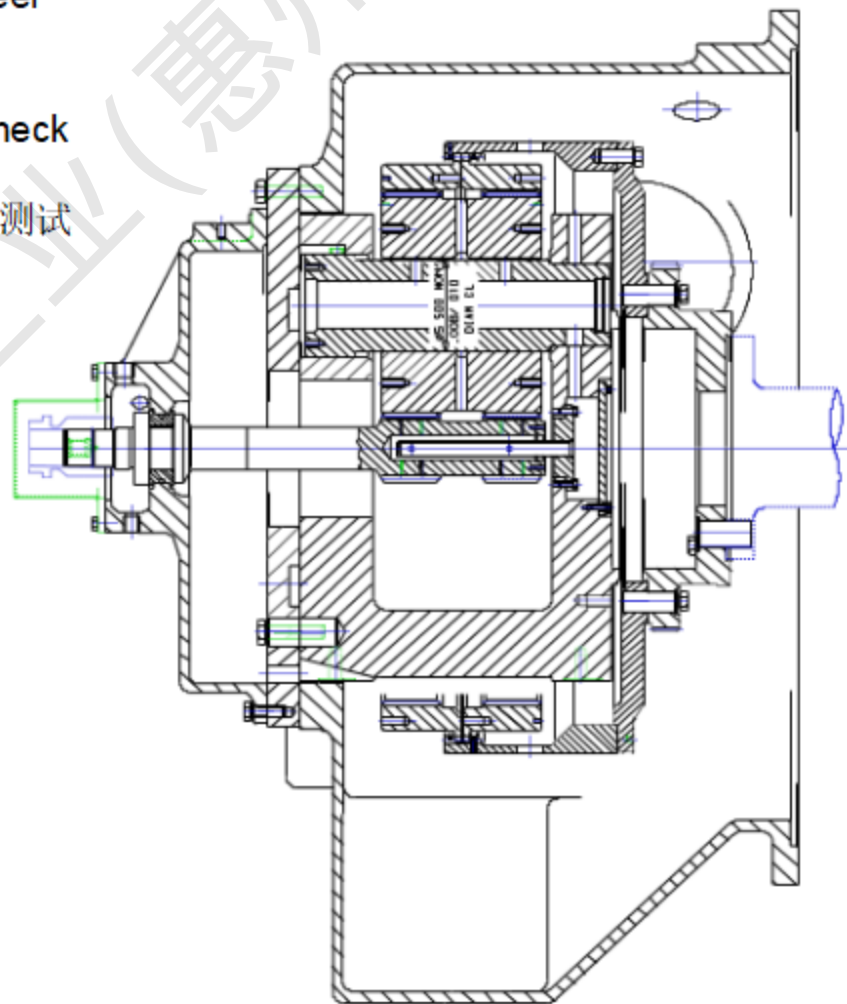
# Epicyclic Gear—行星齿轮 Continued...

Epicyclic-Single Stage generator Mounted Single Bearing Sunwheel  
发电机单级行星齿轮—悬臂布置

Offline overhaul to perform gear tooth check, bearing clearance check and functional test.

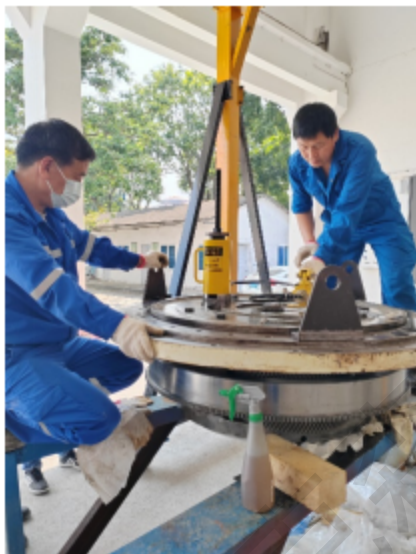
离线解体进行齿面检查，齿轮啮合检查，轴承间隙检查，整体性能测试

Single Stage



用户：中海油湛江分公司  
型号：STAR/ASG34  
品牌：ALLEN GEAR  
平台：涠洲岛作业区  
日期：2023年4月份

齿轮箱自1997年投用以来没有进行过维修检查，本次进行大修检查保养服务。对齿轮，齿环，轴等进行检查，更换轴承以及油封。



# Centrifugal Compressor Repair/离心式压缩机维修

User/用户: 张家港陶氏

Model/型号: GE ,MODEL V505,S/N

Power/功率: 6988RPM,出口压力 11.2BAR

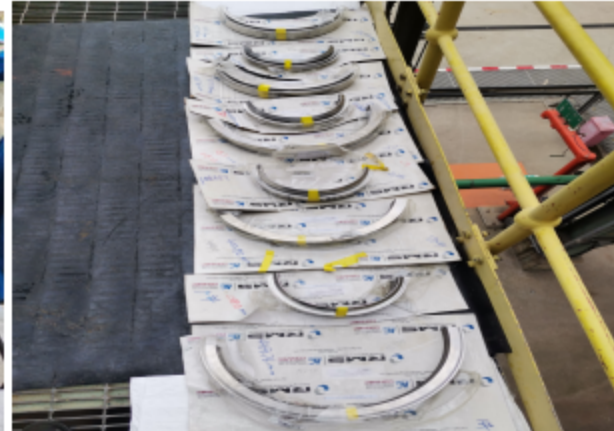
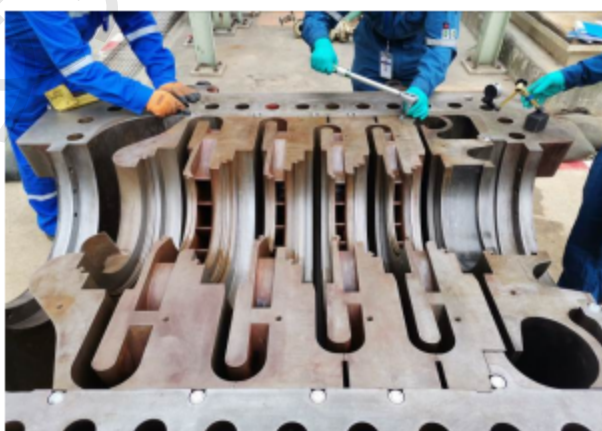
SN/序列号:04452

## Major works performed

### 主要工作内容

- a. Replace the rotor/更换新的转子
- b. Replace the interstage seal/更换级间密封
- c. Check to replace the balance drum seal/检查更换平衡鼓密封
- d. Bearing inspection/轴承检查
- e. Partition Inspection /检查隔板
- f. Dimensional measurement/尺寸测量
- g. Parts inspection/零件检查
- h. Check the oil circuit system/油路系统检查
- i. Back loading/回装
- j. Alignment check/对中检查
- k. Running test/运转测试
- l. Issue maintenance report/出具维修报告

## Backloading and measuring data/回装和测量数据的情况



# Recip Compressor Repair/往复式压缩机维修

User/用户: 中海壳牌

Model/类型: 3TVL80

Number of cylinders/汽缸数量: 4

Compressed series/压缩级数: 3

Compressor speed/压缩机转速: 3685/m

## 检修内容与检修过程控制

a.Preparation before overhaul/检修前准备

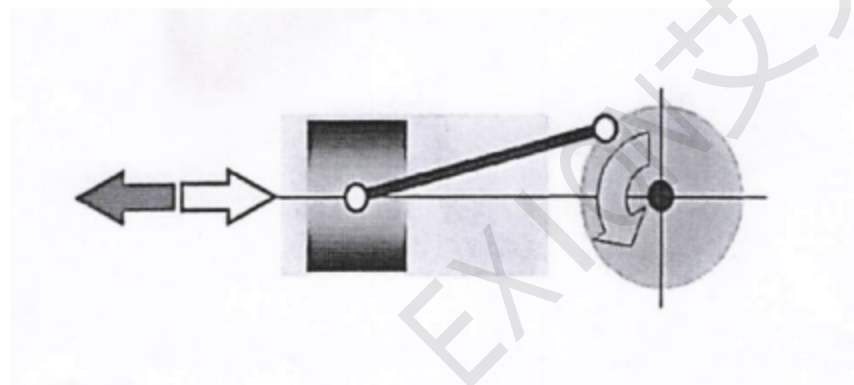
b.Disassembly of auxiliary piping and viewing window/附属管线、看窗的拆卸

c.Cylinder maintenance/气缸检修

d.Disassembly of crankcase components/曲轴箱各部件的拆卸

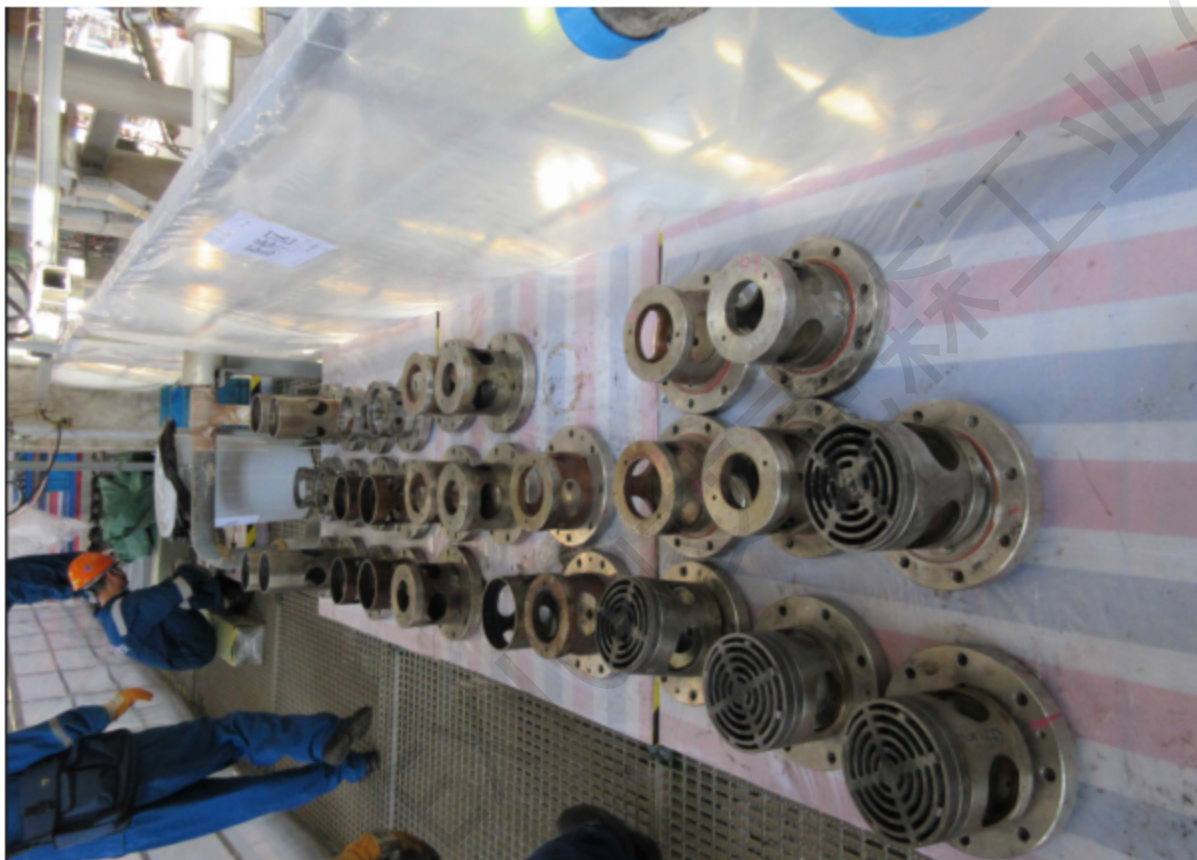
e.Installation of auxiliary pipelines and viewing Windows/附属管线、看窗的安装

f.Clean the site, air-tight running-in delivery/清扫现场, 气密磨合交付使用



# Recip Compressor Repair/往复式压缩机维修

中海壳牌EOEG装置压缩机K-3301现场检修图片



# Recip Compressor Repair/往复式压缩机维修

惠炼六部往复机检修图片



PT检查

# Pump Repair/泵的维修(离心泵)

## Centrifugal Pump Repair/离心泵的维修

- 轴的径向，轴向以及同心度检查与表面修复

Shaft Run out/axial end play /concentricity check and surface repair ( worn out)

- 口环间隙检查与更换

Wear ring clearance check up and replace

- 叶轮清洁检查

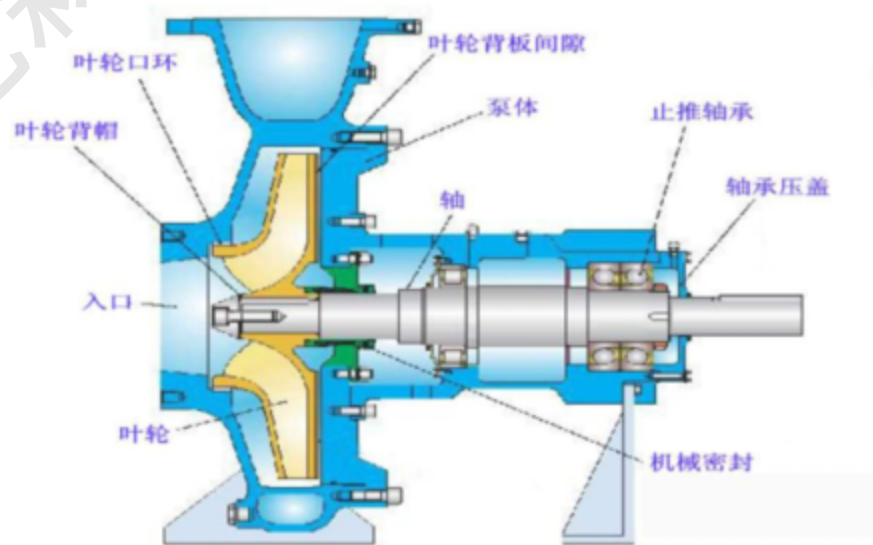
Impeller visual inspection and cleaning

- 轴承以及机械密封的检查和修复

Bearing and mechanical seal replacement

- 现场安装以及对中检查

Site installation and alignment



# Steam Turbine Repair Case/汽轮机维修案例1

2016/07/22 Client: CNOOC&SHELL PETROCHEMICAL

Brand/品牌: Elliott

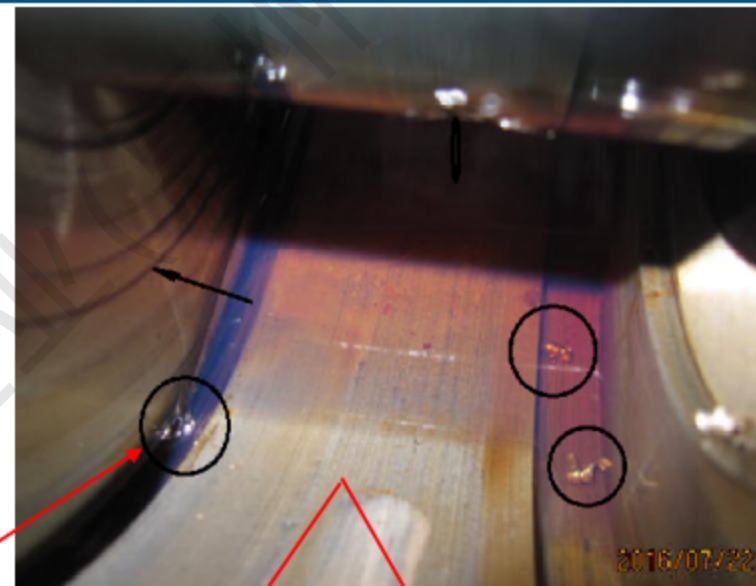
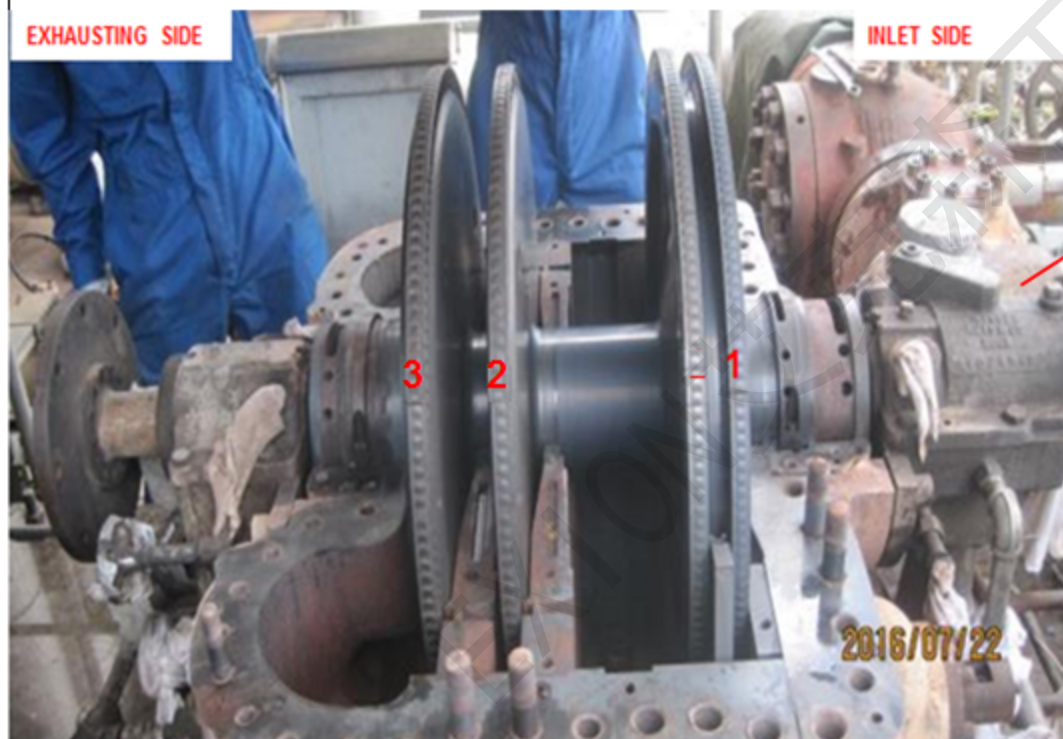
Model/型号: MYR Stage/级数: 3

Rotor needs send back Elliott Tianjin factory to reblade/  
汽封漏气检查, 振动报警, 发现有金属碎屑, 叶片损坏

The inlet filter is clean. GV valve disc & valve seat's seal surfaces are smooth, no pitting points there.

EXHAUSTING SIDE

INLET SIDE



- **1. Site Inspection Service/现场拆装检查服务**

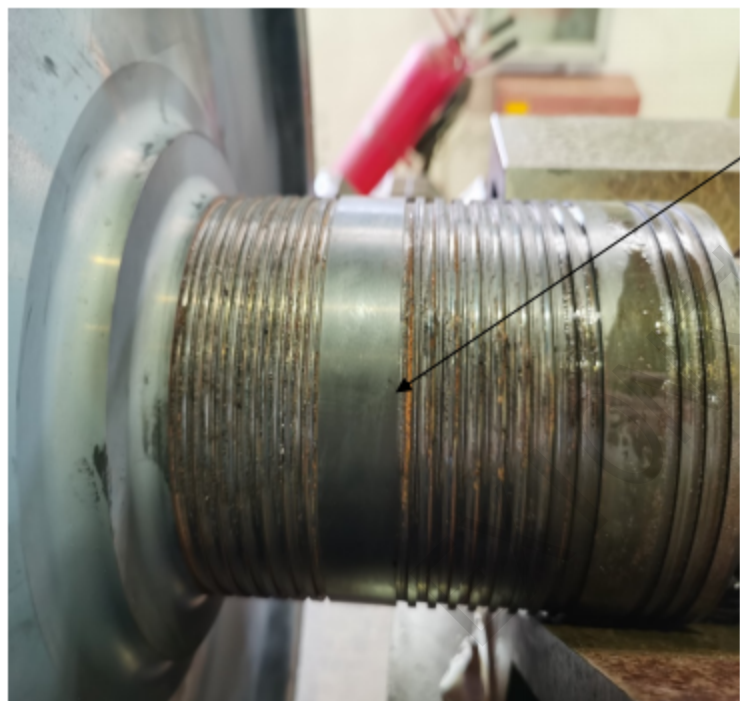
- A. 解体前了解设备运行状况及故障;
- B. 拆掉高/低调阀, 拆两端轴承;
- C. 松开端盖螺栓(电加热或液压拉伸扳手), 吊端盖, 拆汽封移出转子;
- D. 转子检查(表面损伤, 叶片, 隔板/叶片/轴着色裂纹检查, 跳动量检查)
- E. 表面如果发现结垢, 需要进行喷砂清洁处理, 回装前进行低速动平衡;
- F. 更换配件, 转子回装, 检查间隙如有需要进行调整;
- G. 对中检查;
- H. 连接联轴节以及汽轮机附件
- I. 暖机和调试

- **2. Rotor Repair Service /转子维修服务**

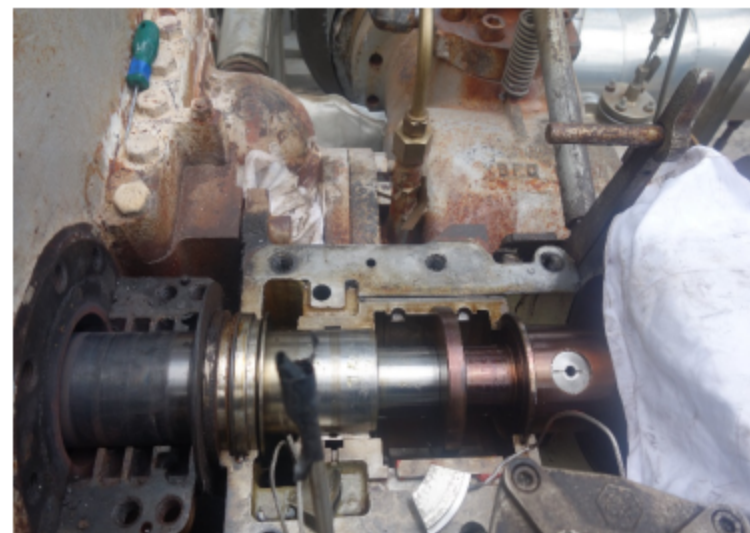
- **Partner/合作伙伴: Elliott TianJin Workshop** (有专业焊接修复设备以及喷砂, 动平衡和机加工设施)
- **Partner/合作伙伴: Local blasting supplier in Dayawan/大亚湾本地喷砂服务**

# Steam Turbine Repair Case/汽轮机维修案例2

- 2020/08/10 Client: CNOOC&SHELL PETROCHEMICAL
- Brand/品牌: Elliott
- Model/型号: MYR Stage: 3/汽轮机级数: 3
- High vibration alarm and rotor labyrinth seal area worn out/高振停车检查，汽轮机转子汽封部位磨损严重



Worn out and send rotor to factory for build up repair/汽封部位磨损，需要返厂进行堆焊修复



发展策略 Business Strategy	标准变频器 (R220) Standard Inverter (R220)	工程型传动 (P122) Engineering Drive (P122)	伺服产品 Servo	低压电机 LV Motor	齿轮电机 Gear Motor	工控机 IPC	数控系统 MTS
1-2年内	1.日常维修替换 2.停产型号替换		1.日常维修替换 2.停产型号替换 3.系统升级改造	1.小项目改造 2.停产型号替换 3.其他品牌替代	1.新项目 2.停产型号替换	1.日常维修替换 2.停产型号替换 3.其他品牌替代	
2-5年内	1.新项目 2.专业服务能力 3.成套设计能力		1.新项目	1.新项目	1.新项目	1.新项目	

1. 西门子产品培训: 针对销售和技术服务人员进行培训
2. 西门子产品售后故障排除: 针对在运行工厂的停产及老旧系统升级改造
3. 立足日常维修服务更换, 型号升级替代, 别的品牌替换, 故障排除系统升级服务
4. 2个西门子授权的技术服务工程师, 专门从事西门子工业产品的成套改造以及服务
5. 作为西门子工业在惠州石化区的售后服务中心, 致力于为用户提供快速高效的服务

**Siemens工业于2022年在中国推出园区ASP服务业务模式, 我司作为第一批ASP认证单位, 从人员培训认证, 使用的仪器, 工业展厅等都按照西门子的要求来配置, 我们力争为客户提供快速响应降低客户的成本。**

## × 西门子工业服务ASP生态圈 ×

石化园区的可持续发展建设正在有序推进, 是提高园区经济运行质量和效益、提升园区和企业的竞争力的关键之举。艾克森工业(惠州)有限公司加入ASP大家庭后, 将与西门子团队一同, 助力石化园区的高质量可持续发展。为此, 在2023年04月23日, 西门子和ASP艾克森工业于惠州大亚湾共同举办了石化园区服务交流会, 并取得圆满成功。



## 直击现场!

在本次会议上, 西门子数字化工业集团ASP业务拓展总经理陈国盛介绍了西门子ASP服务模式及助力ASP完成园区客户服务案例, ASP艾克森工业(惠州)有限公司总经理卢治国分享了艾克森成长历程和作为ASP的服务能力。

采用了标准化的思路:

- A. 标准化的IEC图纸;
- B. 采用EPLAN绘制, 形成的3D图一目了然;
- C. 模块化的编程模块及面板;

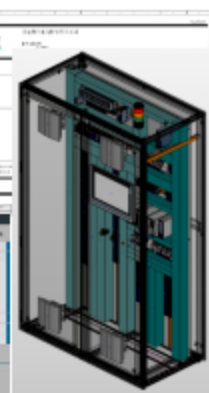
再小的风险也从不妥协:

- A. 电源供电修改为双路独立供电;
- B. 控制器、底板、卡件与外设完全独立供电;

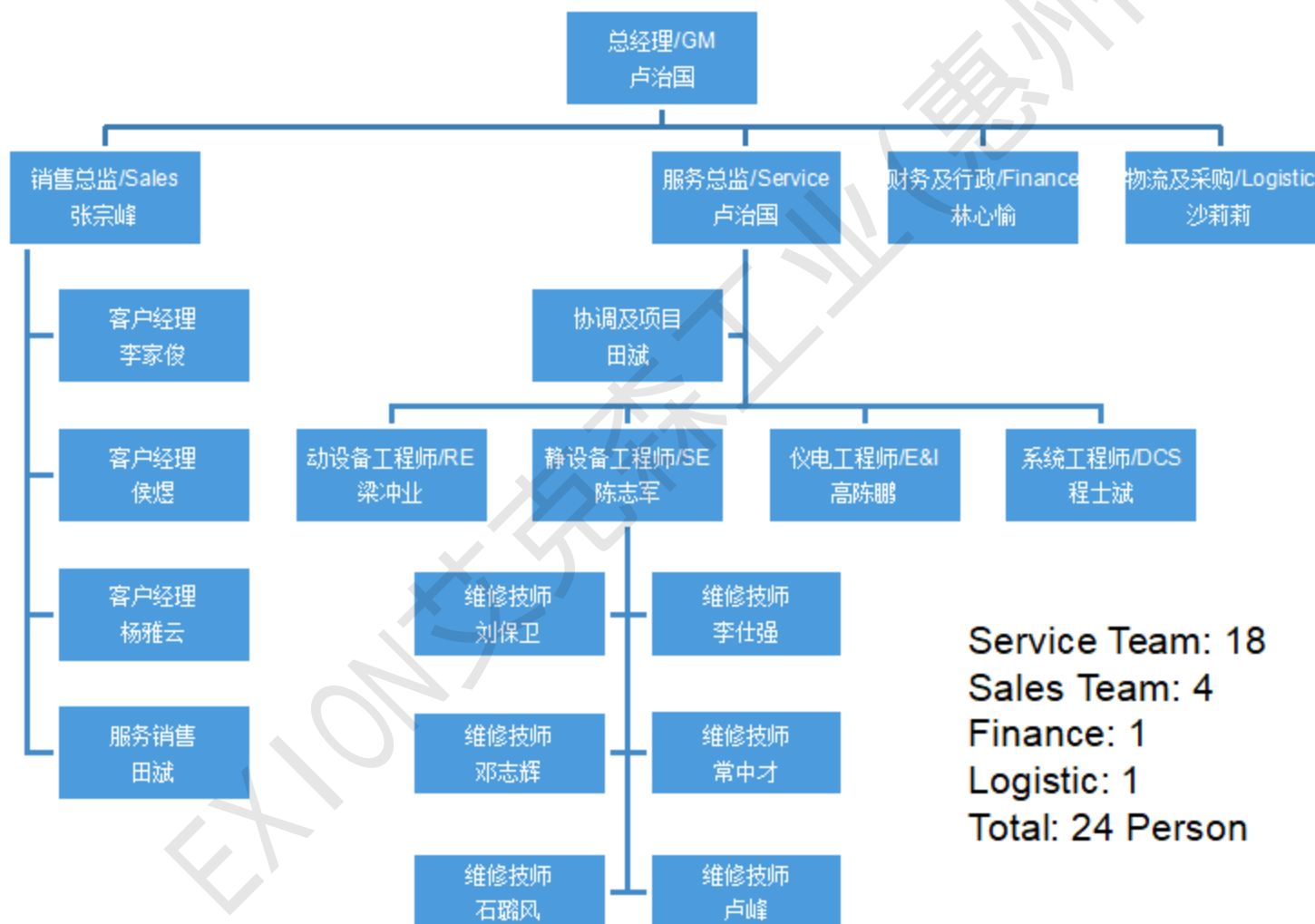


改造过程内容包括:

机柜面板切割, 二次表移位,  
机柜部件拆除整理, 二次表  
进线重新接线, 调试等



# Organization Chart/组织架构



Service Team: 18  
Sales Team: 4  
Finance: 1  
Logistic: 1  
Total: 24 Person

## Certifications & Experience/维修经验及资质

- 4 Technicians obtain safety valve certificate level 2/具有2级安全阀维修证书人员4名
- GE MARC training certificate Level 2/经过梅索尼兰调节阀培训2级培训2人
- Siemens industry certificated engineers/2名经过西门子工业认证的服务工程师
- 6 people obtained IMI product service training certificate/6人取得IMI产品维修证书
- Petrochemical equipment Maintenance experience/维修人员均有石化现场安装和设备维修经验
- Pump OEM service experience/转动设备维修工程师来自泵厂家的现场服务团队，有丰富的经验
- Turnaround experience/具备大修的经验 and 检修项目规划能力
- Long term service contract with Dapeng LNG/跟深圳大鹏LNG签署3年阀门维保协议
- Long term service contract with Youlian Shipyard/跟深圳友联船厂签署了长期阀门维保合同
- Long term service contract with CNOOC Shenzhen/Hainan/跟中海油深圳/海南分公司签署长期齿轮箱维保协议
- ISO certified company /ISO认证公司

# Major Customers/业绩表

- CNOOC&SHELL /中海油壳牌石化
- HMC/惠菱化成 HCS/忠信化工
- Y-Basf/扬子巴斯夫
- Dapeng LNG/大鹏LNG
- ExxonMobil PanYu/美孚番禺化工
- JingBian Natural Gas/靖边液化天然气
- NingXia Hanas/宁夏哈纳斯燃气
- Shell HK LPG/香港壳牌
- APP/海南金海浆纸业
- CEM/澳门电力
- Shell China/壳牌中国
- Sinopec-Sabic/天津中沙石化
- Sinochem Quanzhou/中化泉州
- FRP/福建联合石化
- Gulei Petrochemical/古雷石化
- Asia Paper/亚太森博造纸
- Linde Gas/林德气体
- CNOOC/中海油深圳/海南分公司
- CNOOC Power/中海油东部电厂
- BASF HuiZhou/惠州巴斯夫
- SP Chemical/新浦化学
- Dow Zhangjiagang/张家港道康宁
- Jieyang Petrochemical/揭阳石化
- Youlian Shipyard/友联船厂

Location: Huizhou, China  
Workshop Size = 1,800 Sqm  
Cranes: 3 Ton Crane/5tons



#### Equipment List/设备清单

Manual valve lapping machine up to DN450  
德国 Unigrind 手阀研磨设备  
Control valve lapping machine up to DN300  
德国 Unigrind 手阀研磨设备  
Hydro test bench up to DN350  
水压测试台  
Portable high pressure test bench up to 10,000Psig  
便携式高压测试台  
Control valve test bench  
控制阀测试台  
Drilling machine  
钻床  
Lathe machine  
车床  
Milling machine  
铣床  
Blasting machine  
喷砂机  
Safety valve lapping machine  
安全阀研磨机  
Bearing Heater  
轴承加热器  
Bearing Puller Set  
轴承拉伸器

# Facility

## SWTS ASIA WORKSHOP

- Transformer & Switchgear refurbishment
- Mechanical work
- Sophisticated heavy machinery



# Facility

## SWTS WORKSHOP

- Motor and Generator
- Governor and actuator
- Precise machining



# Exion Asia Workshop

## Rotating Equipment Section

- Dynamic balancing machine x 2
- Performance test bench x 2
- Hydraulics testing capabilities



## Exion Asia Singapore



### OSA Valve & Exion Asia

No. 8 Pioneer Walk  
Singapore 608586  
Tel. No: +65-6896 2627  
Email: [sales@exionasia.com](mailto:sales@exionasia.com)

### OSA Valve Services (Thailand)

9 Soi G3 Road, Pakornsongkorad Road  
Huaypong, Muang, Rayong, 21150,  
Thailand  
Tel. No: +66-81 735 3884  
Email: [osa@exionth.com](mailto:osa@exionth.com)

## Exion Asia HuiZhou



### Exion Asia (HuiZhou) Co., Ltd

#### Previously <OSA Valve Services (Huizhou)>

Petrochemical Industrial Park, HuiZhou,  
GuangDong Province, P.R.China 516086  
Tel: +86-752 3058601  
Email: [ivan.lu@exionasia.com](mailto:ivan.lu@exionasia.com)

### Exion Asia Vietnam

Lot E2, K1 Street, Cat Lai 2 Industrial Zone,  
Thanh My Loi Ward, District 2,  
Ho Chi Minh City, Vietnam  
Office: +84-8 3820 7711  
Email: [cliffordo@exionasia.com](mailto:cliffordo@exionasia.com)

## Exion Asia Malaysia



### Encord Sdn Bhd

No. 1 Jalan TP3  
Taman Perindustrian UEP, Subang Jaya  
47620 Subang Jaya,  
Selangor Darul EhsanTel  
No: +60-380240919  
Email: [encord@tm.net.my](mailto:encord@tm.net.my)

### Encord Pte Ltd

No. 8 Pioneer Walk  
Singapore 608586  
Tel: No: +65-68416741  
Email: [sales@encord.com.sg](mailto:sales@encord.com.sg)